

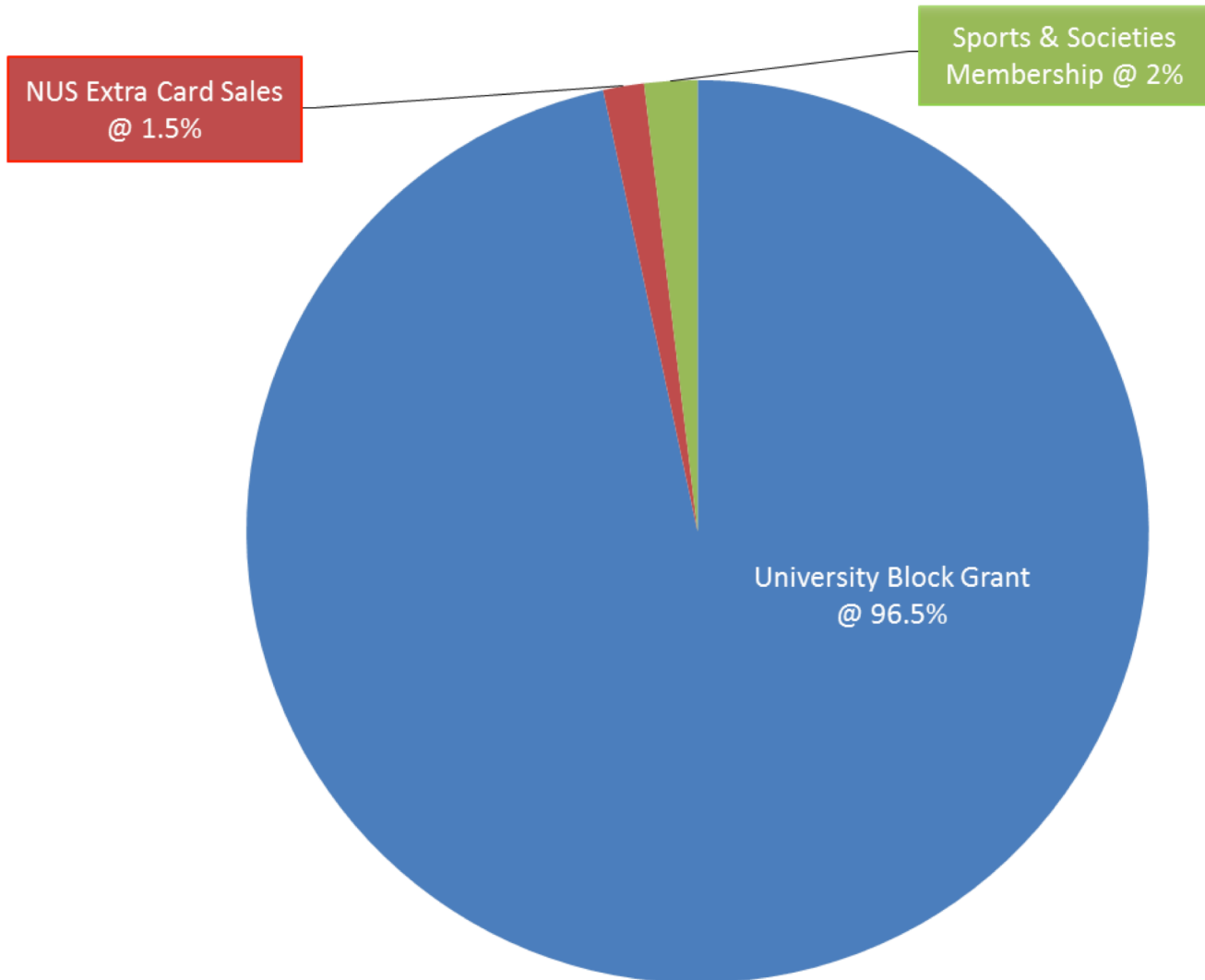


London Metropolitan University  
Students' Union

### 2017-18 Financial Statement Summary

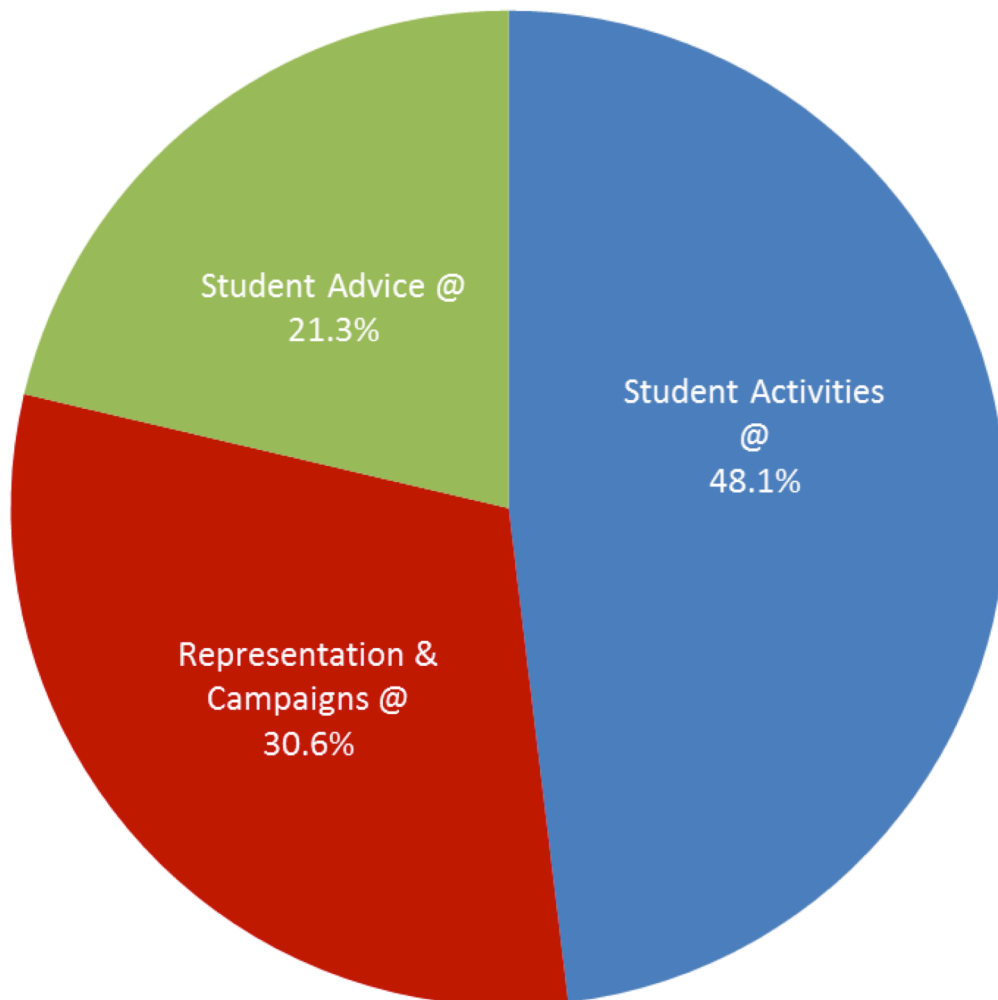
#### INCOME

Block Grant (University)	£554,978
Sports & Societies	£10,900
NUS Extra	£8,400
<b>TOTAL</b>	<b>£574,278</b>



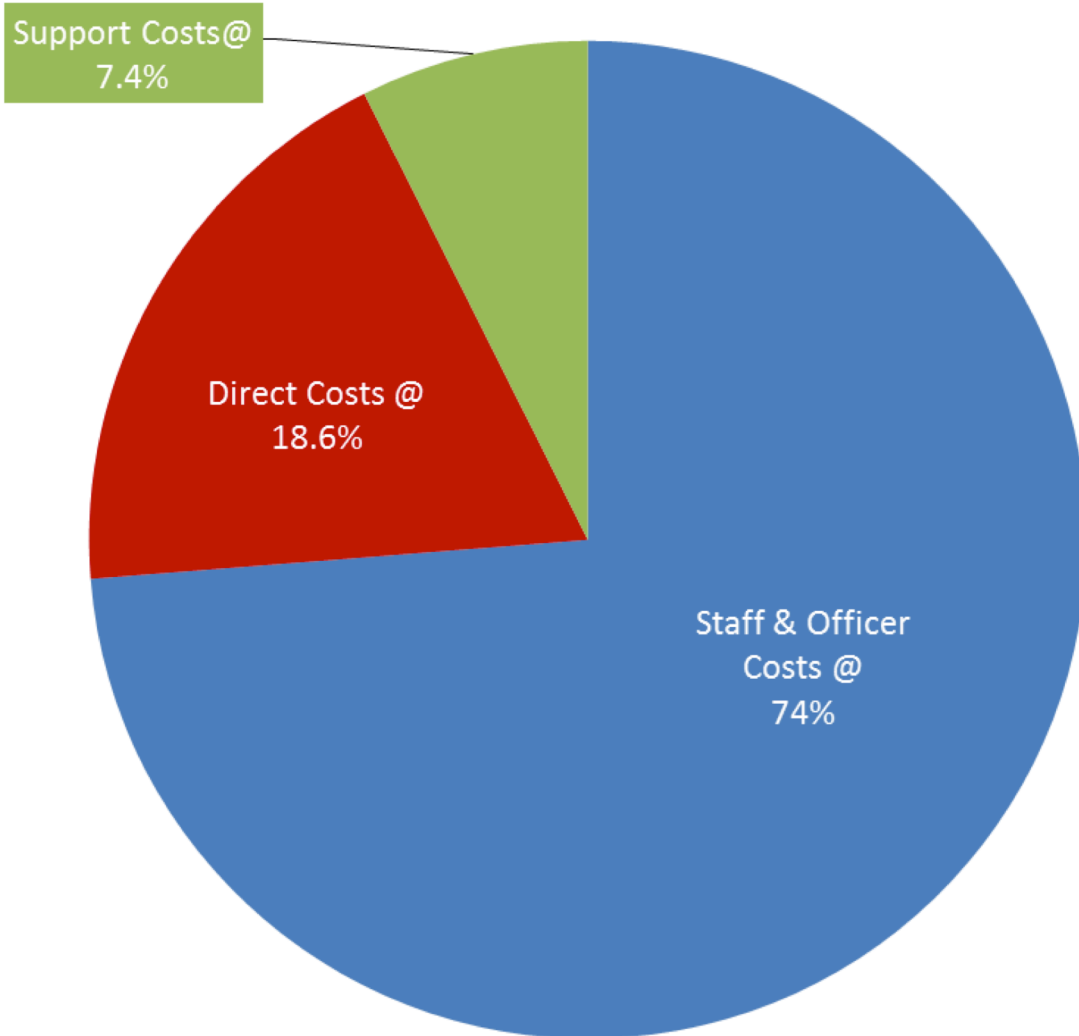
## AREAS OF EXPENDITURE

Student Activities & Development	£266,053
Representation & Campaigns	£169,265
Student Advice	£117,942
<b>TOTAL</b>	<b>£553,260</b>



**RESOURCES EXPENDED**

Staff & Officer Costs	£408,030
Direct Costs	£104,290
Support Costs	£40,940
<b>TOTAL</b>	<b>£553,260</b>



**DIRECT COSTS**

Society Events	£50,063
Affiliation Fees	£17,000
Conferences	£4,000
Marketing	£12,776
Awards	£4,633
Catering	£2,024
Elections	£3,000
Training & Dev.	£2,703
Travel & Subsistence	£8,091

**SUPPORT COSTS**

Website Design	£11,868
Software Costs	£2,720
Insurance	£675
Bank Charges	£566
Office Expenses	£16,854
Account/ Legal Fees	£3,097
Auditors Fees	£5,160

**STATEMENT OF FINANCIAL ACTIVITIES**  
**(Incorporating Income and Expenditure)**  
**For the Year ended 30 June 2018**

	<b>Total &amp; Unrestricted Funds 2018 £</b>	<i>Total &amp; Unrestricted Funds 2017 £</i>
<b>INCOME AND ENDOWMENTS FROM:</b>		
Donations & legacies	<b>554,978</b>	<i>530,488</i>
Other trading activities	<b>19,300</b>	<i>25,712</i>
<b>TOTAL</b>	<b>574,278</b>	<i>556,200</i>
<b>EXPENDITURE ON:</b>		
Student activities and development	<b>266,053</b>	<i>235,551</i>
Student representation and campaigns	<b>169,265</b>	<i>171,584</i>
Student advice	<b>117,942</b>	<i>144,048</i>
<b>TOTAL EXPENDITURE</b>	<b>553,260</b>	<i>551,183</i>
Net income	<b>21,018</b>	<i>5,017</i>
<b>NET MOVEMENT IN FUNDS</b>	<b>21,018</b>	<i>5,017</i>
<b>RECONCILIATION OF FUNDS:</b>		
TOTAL FUNDS AT 1 JULY 2017	19,243	<i>14,226</i>
<b>TOTAL FUNDS AT 30 JUNE 2018</b>	<b>£40,261</b>	<i>£19,243</i>