

Candidate Briefing 2022

Tue 15th Feb 12.00-2.00pm, Wed 16th February 5.00-7.00 & Fri 18th February 2.00-4.00pm



London Met Students' Union

What we will cover today:

1. Welcome & thanks
2. Icebreaker
3. Timeline
4. Communication with elections team
5. Election Advice and support
6. Communication with Elections Team
7. Break
8. The Candidate Pack: Candidate Requirements
9. The Candidate Pack: Candidate Support
10. The Candidate Pack: Campaigning and voting
11. Post Election
12. Questions

L M Student voice
S U and representaion



Welcome and thank you for becoming a candidate

- Election time is the most important time of the year for a Students' Union. Students step up to contest various positions within the Students' Union. Some of these are full-time, paid and require you not to study at the same time. Others (part-time positions) you do alongside your studies and are not paid.
- Standing for election should be a rewarding and enriching experience, regardless of whether or not you win. You will meet new people, gain new skills and improve your confidence as well as hopefully having lots of fun! By standing for election, you are making a significant contribution to LMSU, but it is also a big responsibility to take on.
- The purpose of this session is to go over the election process, timetable, introduce the candidate training and support we offer, talk about some do's and don'ts and answer any questions you may have.

L M Student voice
S U and representation



Election timeline

Week commencing Mon 14th February:

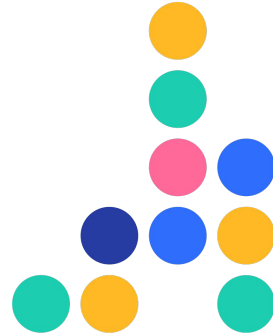
- Applications close on Mon 14th Feb at 5.00pm
- X3 Candidate Briefings (you must attend one)
- X2 Manifesto Writing workshop (optional but recommended that you attend one)

Week commencing Mon 21st February:

- Manifesto deadline Mon 21st Feb at 12:00 noon
- X2 Campaigning and Social Media workshops (optional but recommended that you attend one)
- Campaigning starts on Fri 25th February 5.00pm
- Candidate Question Time (hustings) on Fri 25th Feb 5.00-7.00pm in TG-30

Week Commencing Mon 28th February:

- President Debate on Mon 28th Feb 5.00-7.00pm
- Voting Tue 1st March 09:00am to Fri 4th March 12:00 noon.
- Results declaration Fri 4th March 5.00pm in the Rocket Bar



Communication with Elections Team

It is recognised that running in the election to become a student leader is another commitment in your already busy lives. The election process and timetable is designed with this in mind. Please remember your studies and course must always take priority so don't miss any classes!

Email

The Elections Team will liaise with you primarily via suelections@londonmet.ac.uk

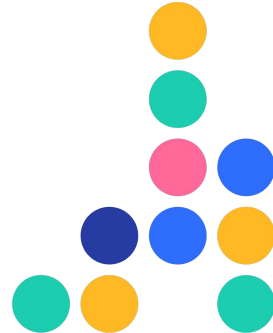
Calendar

We use google calendar a lot in the Students' Union as it is a great tool to stay organised. You will be invited via your student email account's google calendar to various election-related events such as training, workshops etc. If you haven't used google calendar before, this is a good opportunity to start.

Candidate Support sessions

One hour sessions taking place on each day of voting form 10.00-11.00am

L M Student voice
S U and representaion



Election advice and support

Elections Team

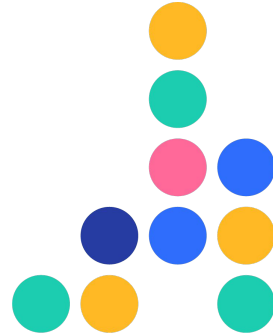
Eddie Rowley, Student Voice Coordinator (Representation and Democracy), and Jacqueline Molineux, Director of Membership / Deputy CEO, make up the Elections Team. Please contact them via suelections@londonmet.ac.uk

Elections page on LMSU website

Everything you need to know about the Students' Union Leadership Election is on this page of the Students' Union website and its 'child' pages :

- [About the Roles](#) - Videos and role description detailing what the roles entail
- [Candidate Hub](#) - Contains the Candidate Pack which is full of information for candidates. Plus other important information such as the 'bye-laws' of the Students' Union (election rules and regulations)
- [Frequently Asked Questions \(FAQs\)](#)
- 'Suggest a friend' and 'why should i run'

<https://www.londonmetsu.org.uk/elections/2022/>



The Candidate Hub

The **Candidate Hub** contains the following:

Key links:

- Election bye-laws (rules and regulations)
- Trustee Declaration - all Full-time candidates are required to fill this in before the voting starts)
- Equality and Diversity form - all candidates are asked to fill this in

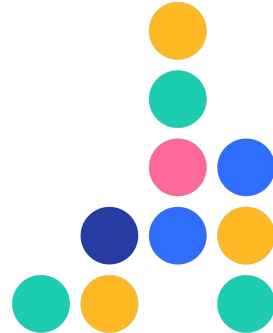
The Candidate Pack:

- Everything you need to know (we will look at this next)

Details of key events:

- Candidate Briefings, Manifesto Writing workshops, Campaigning and Social Media workshops, Candidate Question Time and the Presidents Debate with room numbers or collaborate links (some sessions will be on-campus and some remote).

L M Student voice
S U and representaion



The Candidate Pack

The **Candidate Pack** is located on the elections website in the child-page called 'Candidate Hub.' It is your responsibility as candidates to make sure you have read and understand it. If you're not sure about anything please ask. We will go over some key aspects of it now..

- Candidate Requirements
- Candidate Support:
- Campaigning and voting

L M Student voice
S U and representaion



Questions

L M Student voice
S U and representaion

